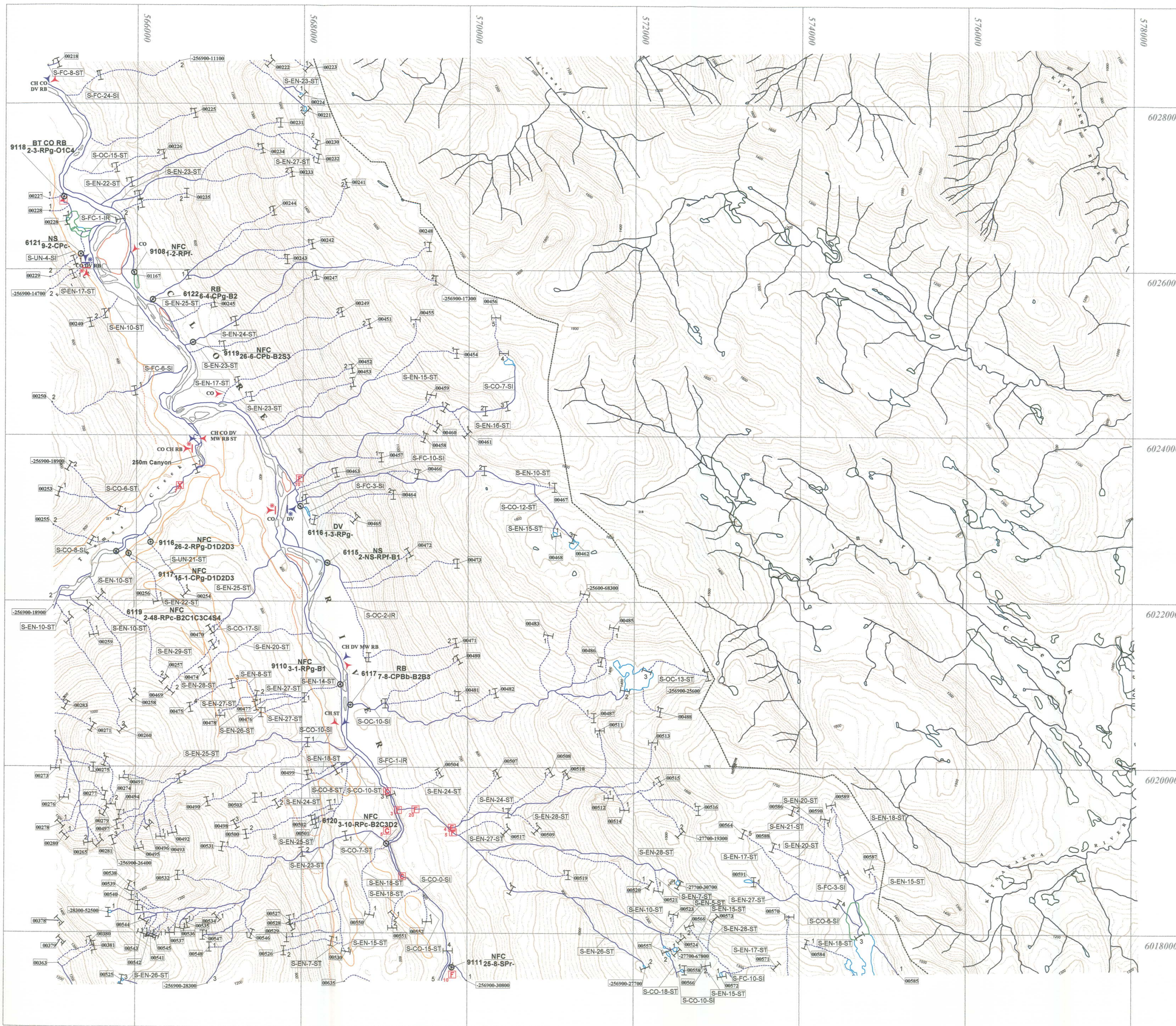
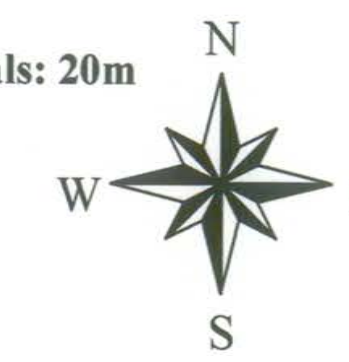


MAP SHEET # 93 L031 (Map 4 of 7)
FISHERIES PROJECT MAP
1:20,000 RECONNAISSANCE FISH AND FISH HABITAT INVENTORY
Copper (Zymoetz) River Watershed WSC 440-000000-00000
CLORE

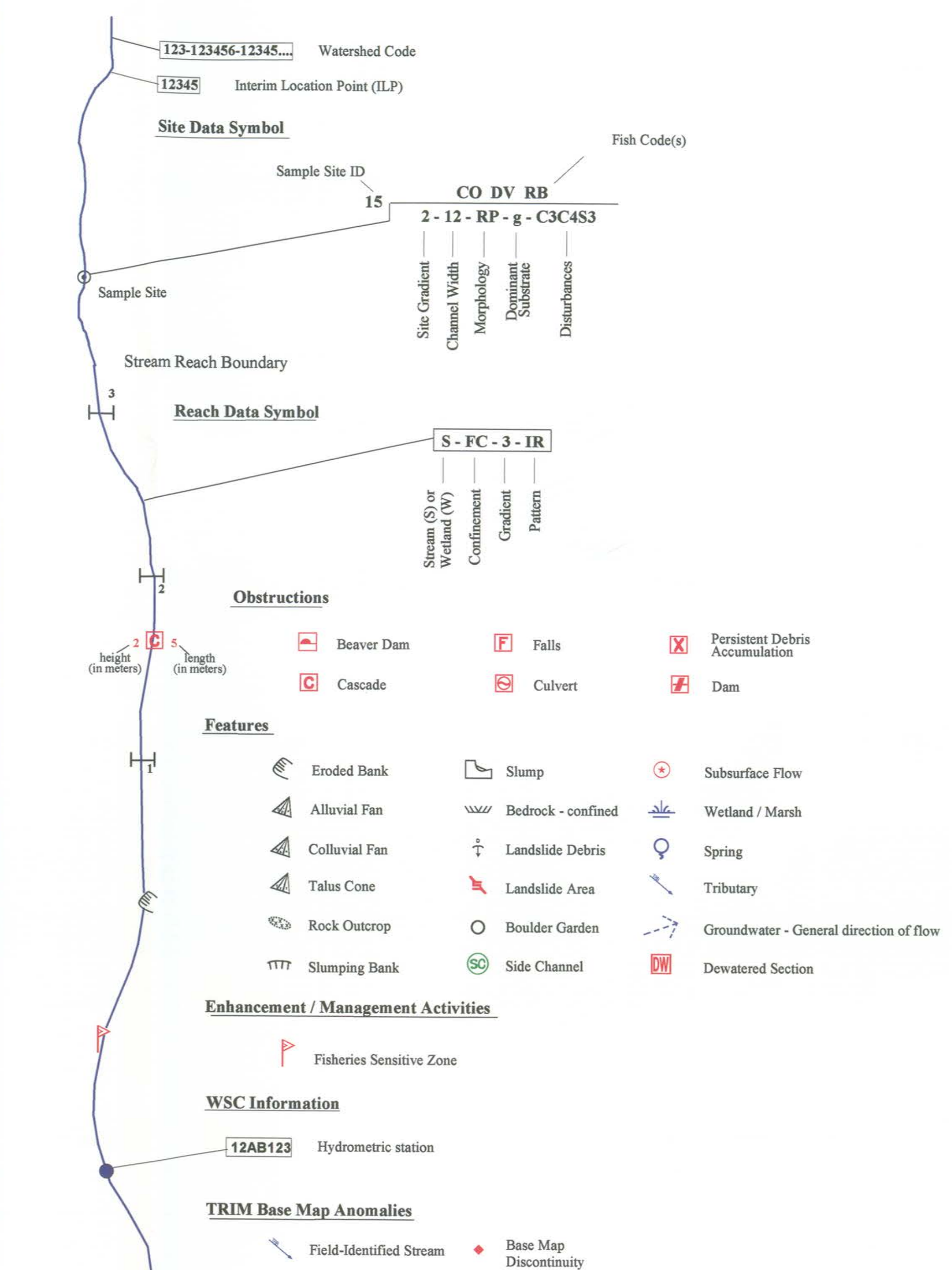
Licensee: Skenna Cellulose Inc. Forest District: Kalum Year: 1999

Scale: 1:20000 Projection: UTM Contour Intervals: 20m

Company: **TRITON** Environmental Consultants Ltd.

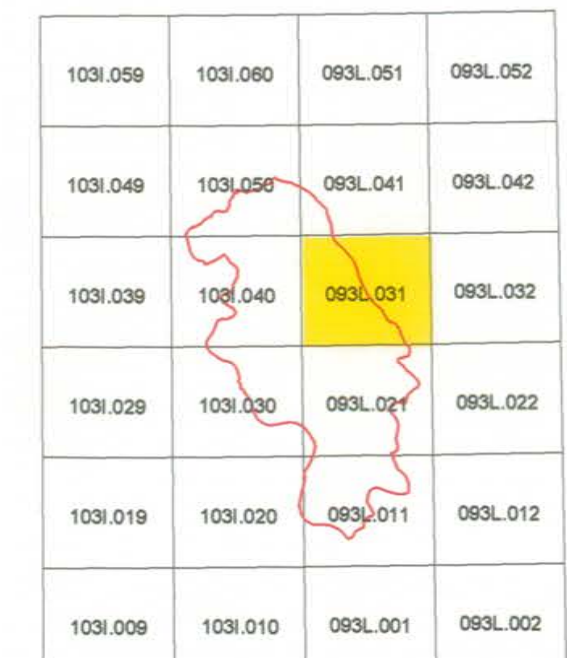


STREAM INFORMATION SUMMARY



FISH SPECIES	
CODE	DESCRIPTION
BT	Bull Trout
CH	Chinook Salmon
CO	Coho Salmon
CT	Cutthroat Trout
DV	Dolly Varden
MW	Mountain Whitefish
NFC	No Fish Caught
NS	Not Sampled
RB	Rainbow Trout
ST	Steelhead

PROJECT STUDY AREA BOUNDARY



This product has been accepted as being in accordance with approved standards within the limits of Ministry quality assurance procedures. Users are cautioned that interpreted information on this product developed for the purposes of the Forest Practices Code Act and Regulations, for example stream classifications, is subject to review by a statutory decision maker for the purposes of determining whether or not to approve an operational plan.

INVENTORY SOURCE INFORMATION CODES	
CODE	DESCRIPTION
BT	Bull Trout
CH	Chinook Salmon
CO	Coho Salmon
CT	Cutthroat Trout
DV	Dolly Varden
MW	Mountain Whitefish
NFC	No Fish Caught
NS	Not Sampled
RB	Rainbow Trout
ST	Steelhead

STREAM SUMMARY SYMBOL INFORMATION	
CODE	DESCRIPTION
BT	Bull Trout
CH	Chinook Salmon
CO	Coho Salmon
CT	Cutthroat Trout
DV	Dolly Varden
MW	Mountain Whitefish
NFC	No Fish Caught
NS	Not Sampled
RB	Rainbow Trout
ST	Steelhead

BASE MAP INFORMATION	
Projection:	UTM
Datum:	NAD83
UTM Zone:	9

INVENTORY SOURCE INFORMATION	
BASE:	TRIM
LOC:	FDG
HAB:	INV
DATE INV:	1998/10/07
STR SYM:	INV
LK SYM:	NA
FISH:	INV
INV MGNT:	OTH